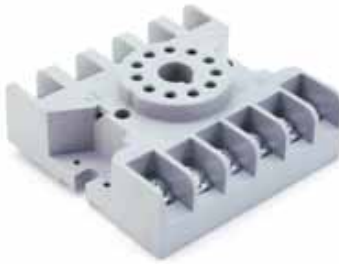
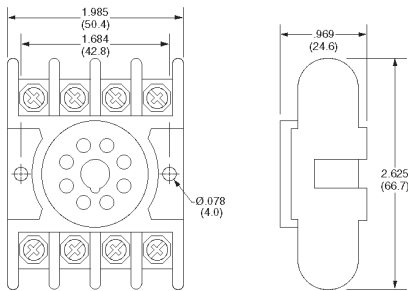


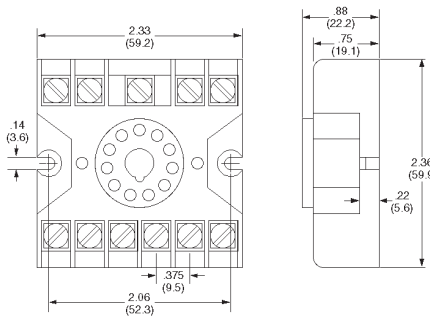
SOCKETS



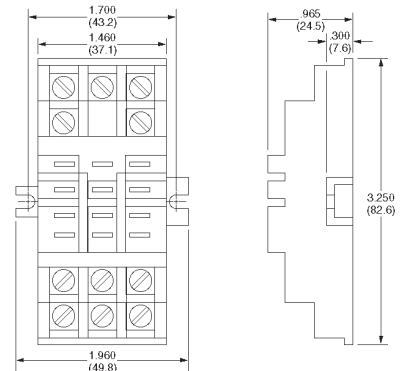
RP-302 8 pin socket, panel mount only



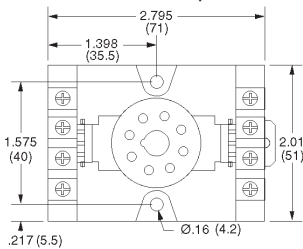
RP-303 11 pin socket, panel mount only



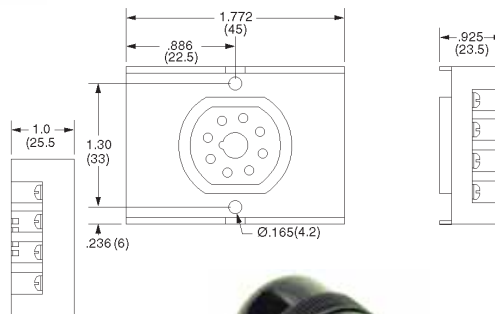
RP-304 11 pin flat terminal socket, panel mount only



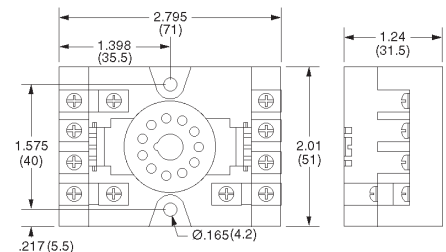
RP-320 8 pin socket, DIN rail or panel mount, with hold-down clips



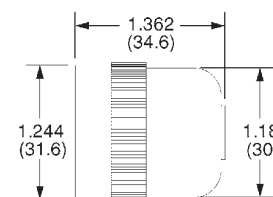
RP-321 8 pin reversed socket, permits wiring from rear of unit when panel mounting



RP-322 11 pin socket, DIN rail or panel mount, with hold-down clips



RP-324 11 pin cable socket



RP-323 8 pin cable socket (not shown)