



Kanson Electronics, Inc.

INDUSTRIAL SOLID STATE MOTION DETECTOR

MODEL 1214 BASE MOUNT

SPECIFICATIONS

INPUT

VOLTAGE: 120VAC, 24VAC/DC
FREQUENCY: 50/60 Hz
TOLERANCE (VOLTAGE): ± 10% of nominal
POWER CONSUMPTION: 10 VA maximum
TRANSIENT PROTECTION: Isolation transformer (120VAC only)

OUTPUT

TYPE: Electromechanical relay
RATING: 10A - 240VAC maximum

FUNCTION

TYPE: Motion detector
TIMING RAMP: 100kΩ/sec
TIME RANGE: 0.06 to 100 secs in 10 ranges
RANGE TOLERANCE: ≤ 10% at max, ≤ 0% at min
CONTROL: Isolated contact closure (maximum resistance - 100Ω)
CONTROL TERMINALS: E-F
VOLTAGE PRESENT AT CONTROL TERMINALS: 24VDC minimum, 40VDC maximum
CYCLE TIME: Min. time control circuit closed 2msec
Min. time control circuit open 50msec
Max. control circuit pulses/sec 18

PHYSICAL

OPERATING TEMP: 0° to 50° C (32° to 120°F)
TIMING VARIATION VS. TEMP: ± 5% maximum
MOUNTING: Base mount
TERMINATION: Terminal blocks on face of timer
HOUSING: Metal

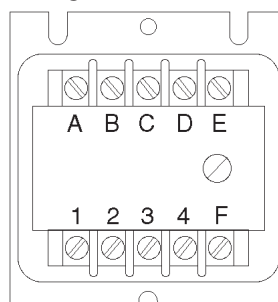
WIRING

OUTPUT B,B1,B2

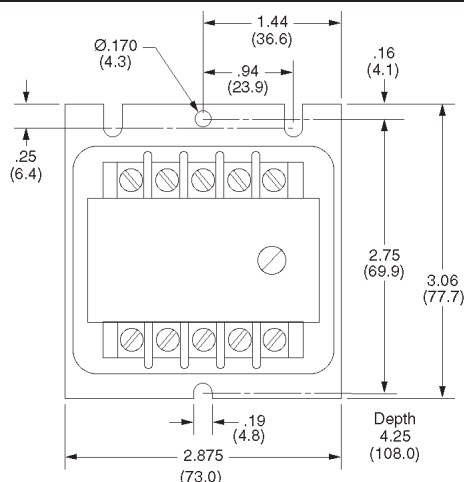
- A-B Voltage input (constant)
- C-D Remote adjust (jumper if not used)
- E-F Control (resets timing function)
- 1-2 N.O. timed (except B2, N.C.)
- 3-4 N.C. timed (except B1, N.O.)

Caution: Never apply voltage to C-D-E-F

Wiring Terminal Location



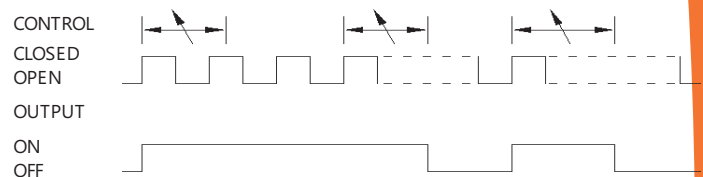
DIMENSIONS Inches (millimeters)



Underspeed Detector

Compact unit is designed for use in standard mechanical switch applications.

OPERATION



Closing the control circuit energizes the output. Opening and reclosing the control circuit before the set time interval completes keeps the output energized, and it remains energized as long as the monitored motion continues to provide at least two pulses per set time interval. If the monitored motion stops, the output de-energizes after the set time interval completes, even if motion stops in such a way that the control circuit remains closed.

ORDERING DATA

ORDERING CODE 1214 - 1 - J - B

BASIC MODEL NUMBER 1214

INPUT VOLTAGE
1 120VAC
2 24VAC / DC

TIME RANGE (Secs)
A 0.06-0.10 F 0.06-5.0
B 0.06-.25 G 0.06-10.0
C 0.06-.50 H 0.06-25.0
D 0.06-1.0 J 0.06-50.0
E 0.06-2.5 K 0.06-100

OUTPUT
B Relay 1 N.O., 1 N.C.
B1 Relay 2 N.O.
B2 Relay 2 N.C.

APPLICABLE ACCESSORIES

See accessory section for details
Potentiometers RP-201 thru RP-210
Reference dial RP-216
Locking attachment RP-217