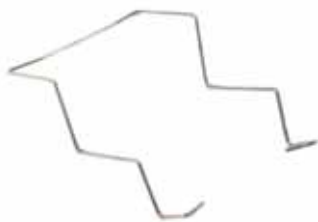


## MISCELLANEOUS HARDWARE

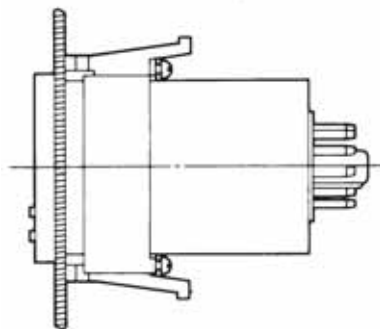
**RP-306** Hold down clip



**RP-305** Hold down clip

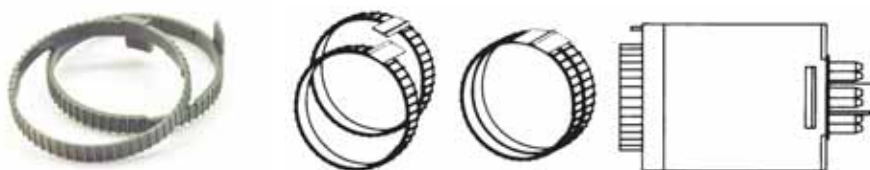


**RP-311** Timing indication light

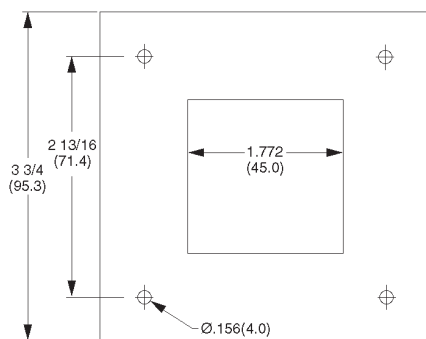


**RP-325** Panel mounting clamp for DIN timers

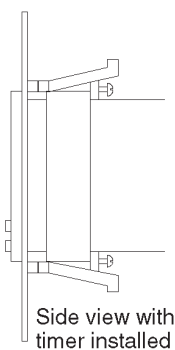
**RP-326** Protective cover, Clear, 1094, 1095, 1096 or 1105C only



**RP-327** Stop/locking rings, fits over dial on DIN timers. For units with numbers that end in -1 or -2 only.



Material : 16 ga steel, gray primer



**RP-330 Adapter plate** permits replacement of ATC 305, 310, 325 & 335 and Eagle Signal CA, CE, CD, CT, CX, HG, HQ, HP & HZ products with the ISSC Model 1068, 1073, 1081, 1090, 1094, 1095, 1096, & 1105C.

No modification of the existing panel cut-out is required. Simply remove the existing timer or counter and install the ISSC RP-330 in its place using 6-32 hardware. The appropriate ISSC timer or counter may now be installed into the "new" panel opening by utilizing an ISSC model RP-325 panel mount clamp. (one RP-325 is included with digital models but must be ordered separately for analog models)



**RP-503** 2m cable with connector for 1248A or 1250  
**RP-503-5** same as above 5m long

